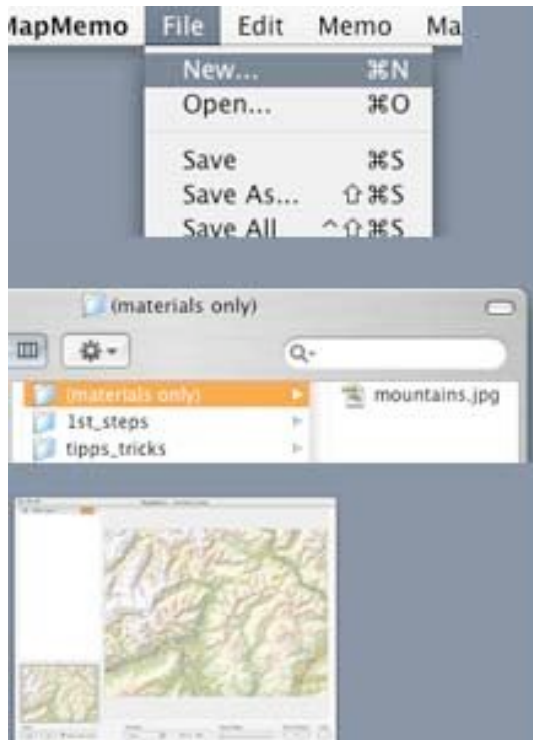


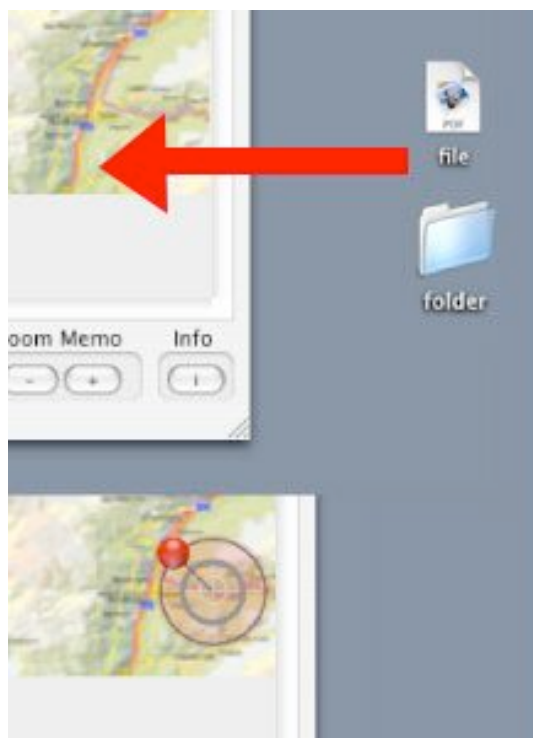
MapMemo Tutorial



Select **File New** and...

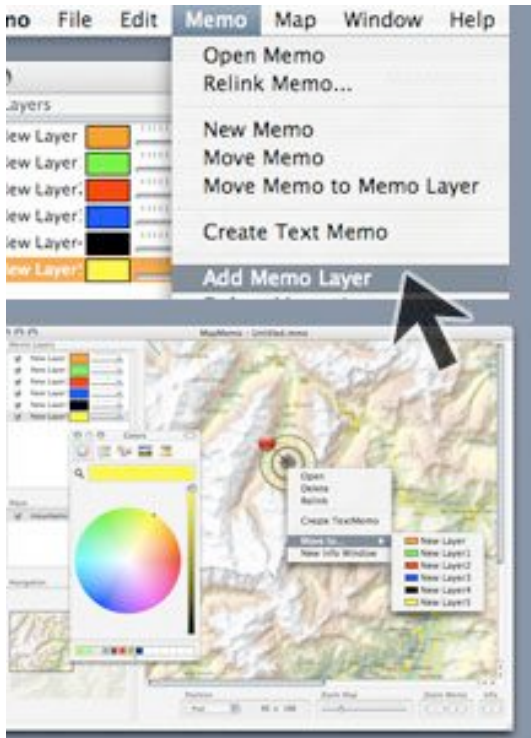
choose **mountains.jpg** from (materials only) folder and ...

you have created a **MapMemo** file.



Drag any **file** or **folder** on your Map and ...

you have created your first **Memo**.



Use **Add Memo Layer** to create a new layer.

Choose a **color** and a name for every layer.

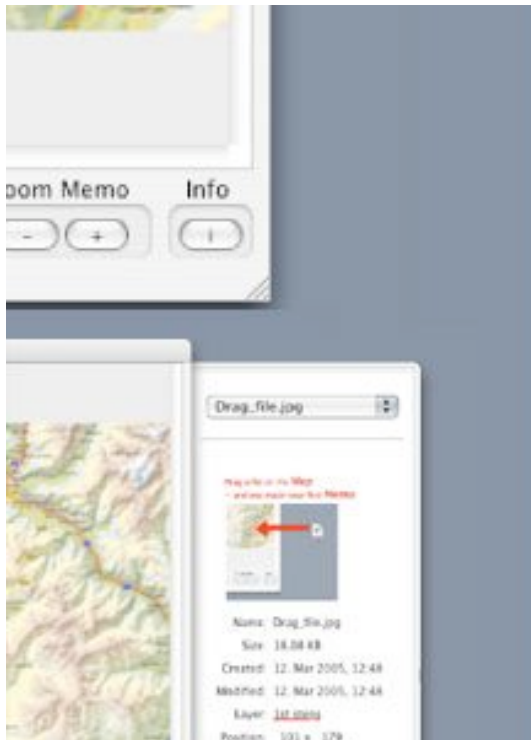
Move your Memo to a specific layer using the context menu.



Zoom the Map and move your actual view around.

Zoom the size of the Memos to give them a 2nd meaning.

Move your Memos by pressing **Shift**  when you drag.



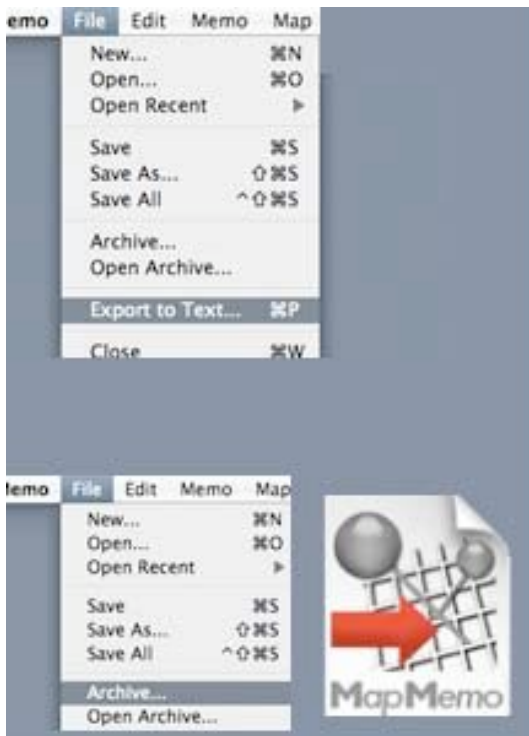
Select any red pin,
press the **Info** button
and...

the Info-Window will
open and give you a
Preview of your
Memo, the **Position**
and a place to type
Comments.



Whenever you want to
open a Memo
2x click on the
red pin – like you did
already in this tutorial.

A Memo is a **link** to
a file and 2x clicking
opens it in it's
belonging application.



Save your file like in any other application.

Use **Export to text** to generate a text or pdf file of your MapMemo work.

You can use an **Archive** to mail or copy your MapMemo file with all its linked files to another Mac.



For further details use our **Help** pages.

For problems and deep inside questions read the FAQ section on our **Website**.

Thank you very much for using **MapMemo**.

<http://www.mapmemo.com>